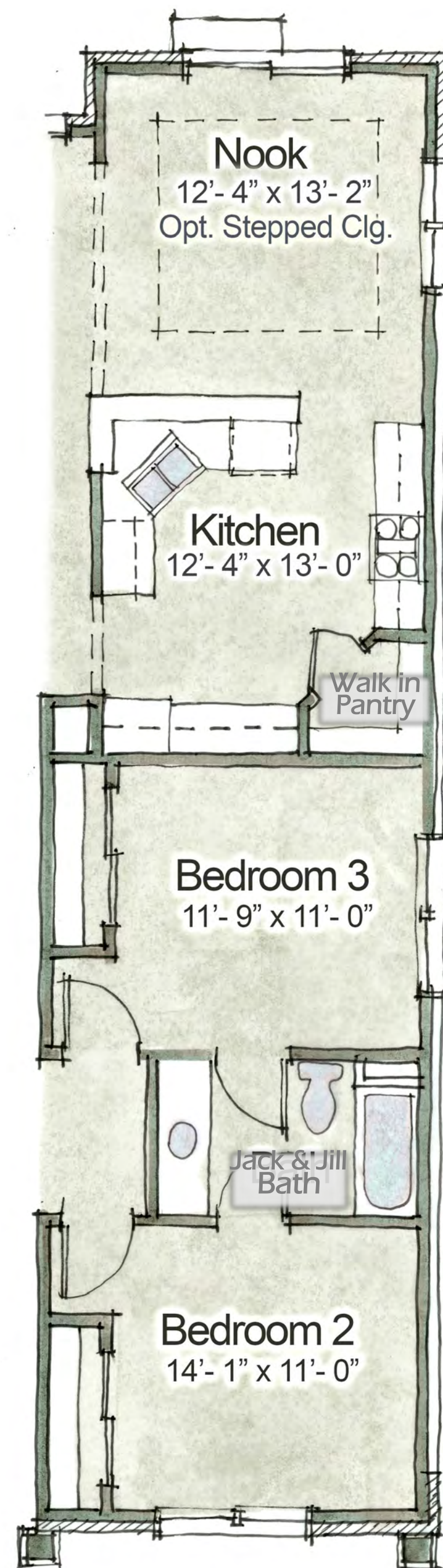
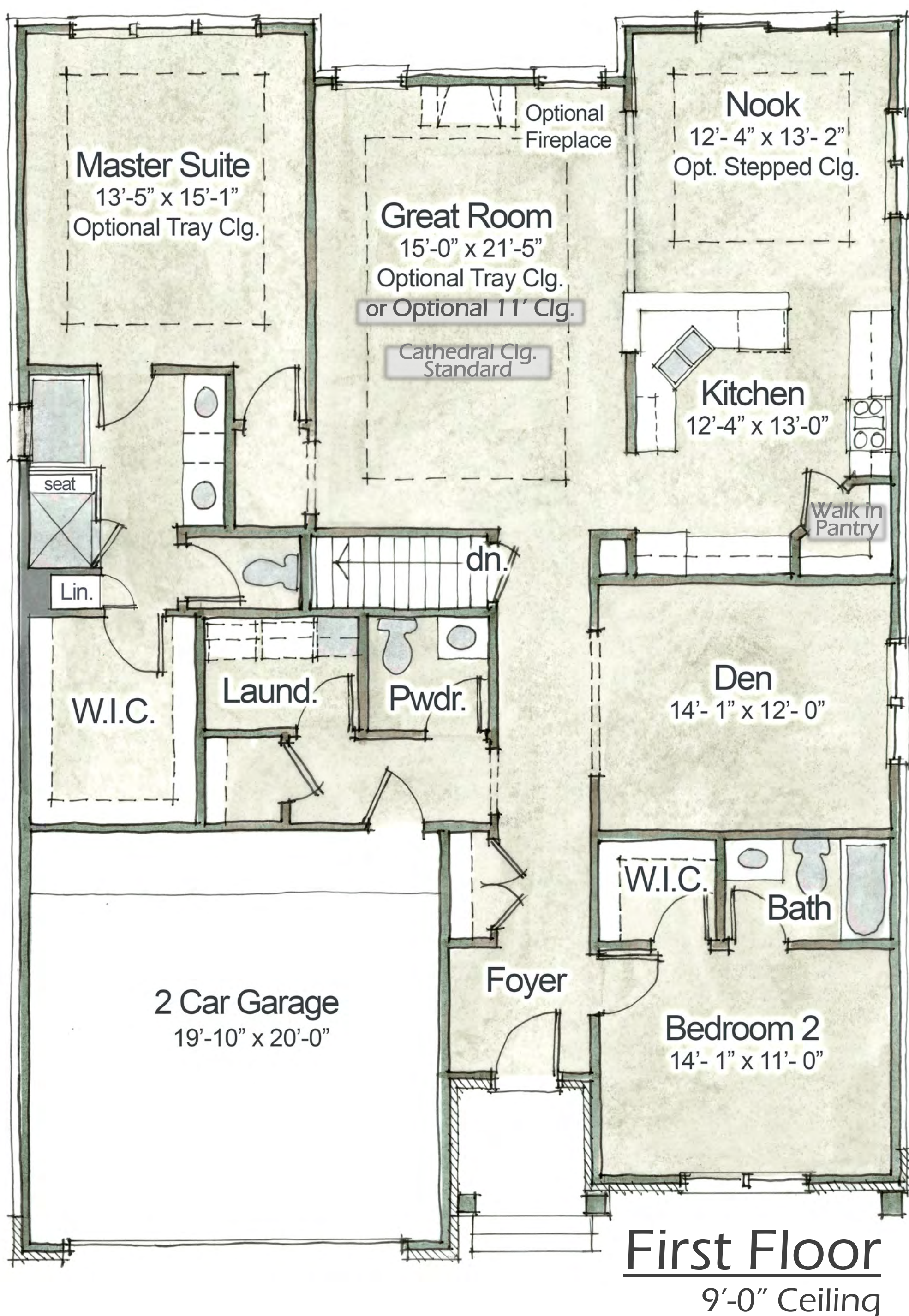
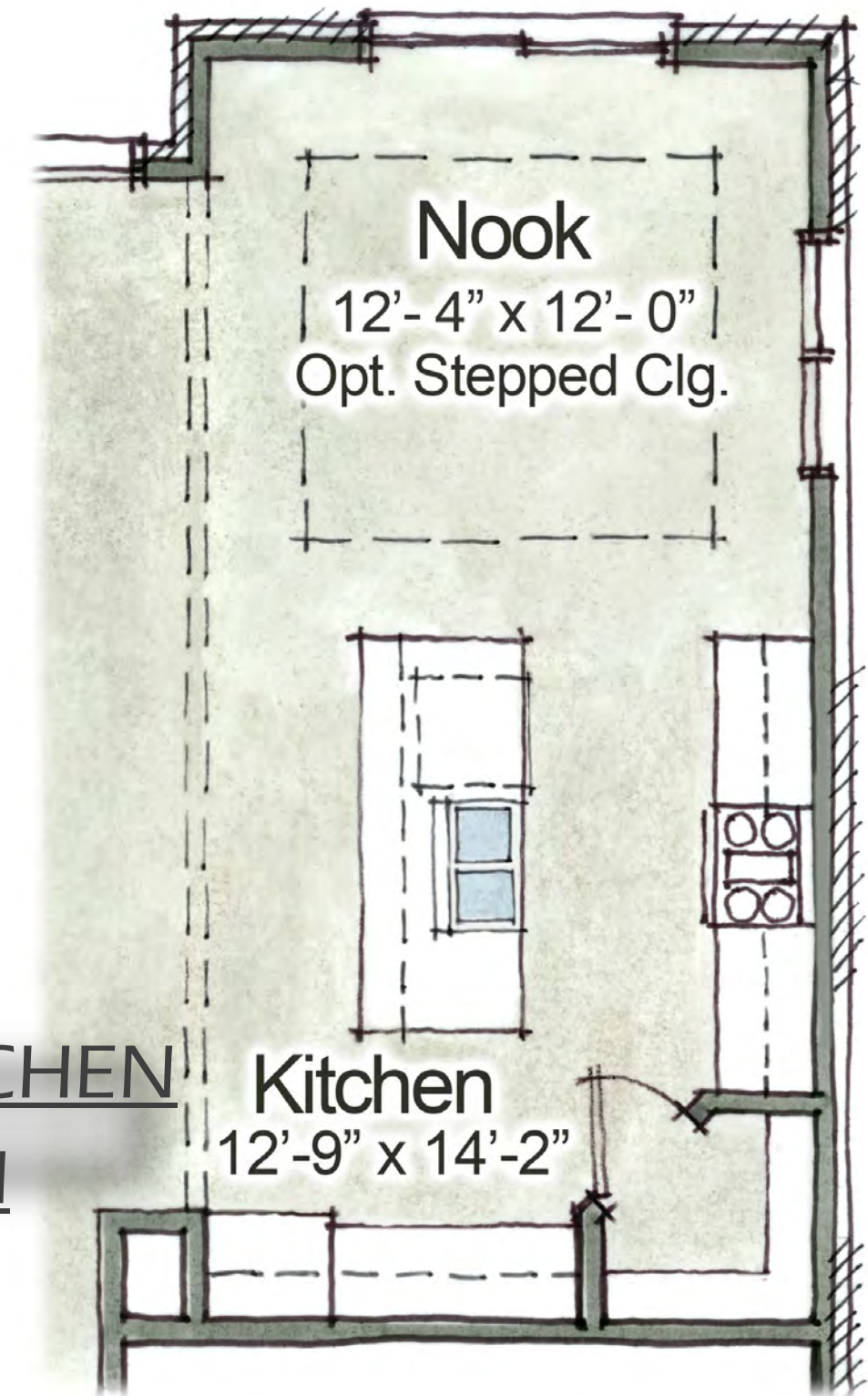


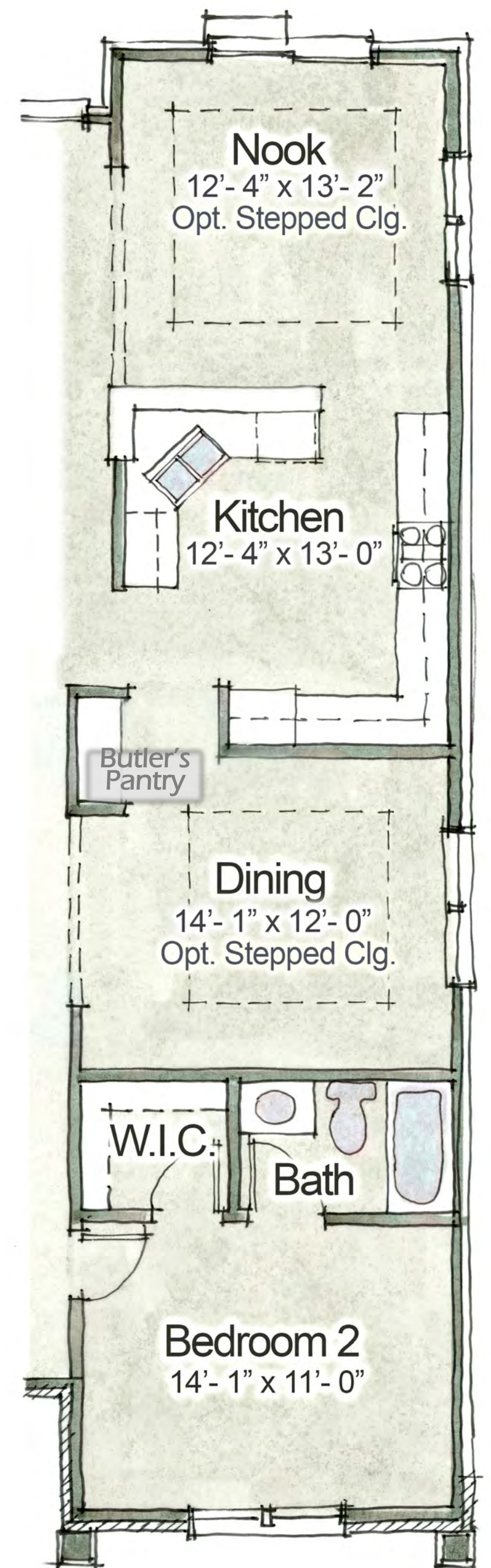


## FEATURES

- 2 OR 3 BEDROOMS
- 2 1/2 BATHROOMS
- 9'-0" FIRST FLOOR CEILINGS
- 2 CAR GARAGE
- OPEN KITCHEN, NOOK & LARGE GREAT ROOM
- WALK-IN PANTRY
- PRIVATE & LUXURIOUS MASTER SUITE WITH SPACIOUS WALK IN CLOSET, SOAKING TUB, SEPARATE SHOWER & PRIVATE WATER CLOSET
- PLENTY OF CLOSET SPACE THROUGHOUT
- 3 LAYOUT OPTIONS AVAILABLE TO SUIT YOUR LIFESTYLE



BEDROOM #3 OPTION



DINING ROOM OPTION